


LOOK-BOOK



emi

TWINNY



 Verbrauch pro Nagel: 0,03-0,04 ml, abhängig von der Nagellänge und der Modellage Schicht.

TWINNY
COLOR SCULPTING GEL POLISH

FARBIGER MODELLEGE GEL LACK

- ☑ Kombination aus beiden Schritten, Modellage und Fullcover.
- ☑ Nagelplatte gleichzeitig modellieren, verstärken und formen.
- ☑ Kaum sichtbarer halbtransparenter Rand, wenn die Nägel herauswachsen.
- ☑ Farbpalette mit 6 sanften Pastelltönen.
- ☑ Mit Glossy oder Matt Finish ein makelloses Ergebnis.
- ☑ Perfekt für jede Hautfarbe.
- ☑ Feiner Schimmer verleiht den Farben Eleganz.
- ☑ Großer Glitter als besonderer Hingucker.
- ☑ Kein abplatzen, kein ausbleichen, zieht sich nicht zusammen.
- ☑ Haltbarkeit mindestens 4 Wochen
- ☑ Kompatibel mit allen EmLac Base und Top Gelen
- ☑ Soak-off.



Medium viscosity: it's a bit higher than that of E.MiLac Sculpt-Medium Base Gel.

TWINNY

COLOR SCULPTING GEL POLISH



TWINNY

COLOR SCULPTING GEL POLISH

E.MiLac TWINNY

MARGARITA #01

Step 1. Prepare the nail plate, polish and shape.
Degrease with Eurocleanser.

Step 2. Apply Ultrabond on the entire nail plate to prevent detachments on the nail cuticles area. Air dry.

Step 3. Apply a thin layer of E.MiLac Base Gel.
Cure 1 min in a LED/CCFL lamp.

Step 4. Apply a first thin layer of E.MiLac Twinny Margarita #01. Cure 2 min in a LED/CCFL lamp. Apply a second sculpting layer, turn and center. Make sure the layer thickness on lateral sides and nail end is at least 0.5 mm. Cure 2 min in a lamp.

Step 5. Apply a finish coating at your choice: E.MiLac Top Gel / E.MiLac Ultra Shine Top Gel / E.MiLac Velvet Top Gel.
Cure 2 min in a LED/CCFL lamp.



ADVANTAGES OF SERVICES PROVIDED WITH THE USE OF COLOR SCULPTING TWINNY GEL POLISHES



Superfast manicure:
Twinny helps you considerably reduce a manicure session length



Ideal for clients who come late



Time spent on a nail correction or mini-correction is reduced to its minimum



Twinny aligns/sculpts the nail plate and gives it a desired color shade

TWINNY
COLOR SCULPTING GEL POLISH



TWINNY

COLOR SCULPTING GEL POLISH

E.MiLac TWINNY BLUEBIRD #02

Step 1. Prepare the nail plate, polish and shape. Degrease with Eurocleanser. Apply Ultrabond on the nail end and air dry.

Step 2. Apply a thin layer of E.MiLac Base Gel. Cure 1 min in a LED/CCFL lamp.

Step 3. Apply a coating using E.MiLac Twinny Bluebird #02. Sculpt, turn and center. Cure 2 min in a LED/CCFL lamp.

Step 4. Apply a second sculpting layer, turn and center. Make sure the layer thickness on lateral sides and nail end is at least 0.5 mm. Cure 2 min in a LED/CCFL lamp.

Step 5. Use the Nail File Zebra Standard 100/180 to condition the architecture, if required, and polish up with the Soft File 100/180. Degrease with Eurocleanser.

Step 6. Use the Brush Beveled Square for French manicure #6 and CLASSIC gel paint Alpine Snow to draw a decorative smile line. Cure 1 min in a LED/CCFL lamp.

Step 7. Apply a finish coating using E.MiLac Ultra Shine Top Gel. Cure 2 min in a LED/CCFL lamp.



TWINNY

COLOR SCULPTING GEL POLISH



TWINNY

COLOR SCULPTING GEL POLISH

E.MiLac TWINNY

PIÑA COLADA #05

Step 1. Prepare the nail plate, polish and shape. Degrease with Eurocleanser.

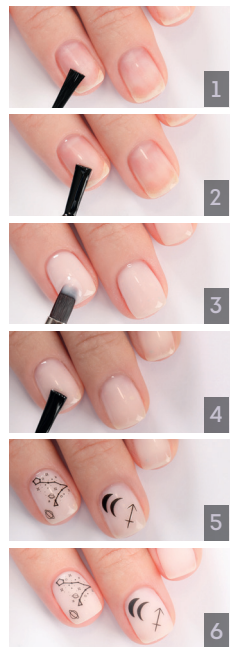
Step 2. Apply Ultrabond on the entire nail plate to prevent detachments on the nail cuticles area. Air dry.

Step 3. Apply a first thin layer of E.MiLac Twinny Piña Colada #05. Cure 2 min in a LED/CCFL lamp. Apply a second sculpting layer, turn and center. Cure 2 min in a lamp. Make sure the layer thickness on lateral sides and nail end is at least 0.5 mm. Cure 2 min in a LED/CCFL lamp.

Step 4. Apply E.MiLac Top Gel Tackless and cure 2 min in a LED/CCFL lamp.

Step 5. Apply Charmicon 3D Silicone Stickers #126 Constellations. Use E.MiLac Top Gel Tackless to fixate the decoration and cure 2 min in a LED/CCFL lamp.

Step 6. Apply a finish coating using E.MiLac Velvet Top Gel. Cure 2 min in a LED/CCFL lamp.



TWINNY

COLOR SCULPTING GEL POLISH



TWINNY

COLOR SCULPTING GEL POLISH

E.MiLac TWINNY AVIATION #03

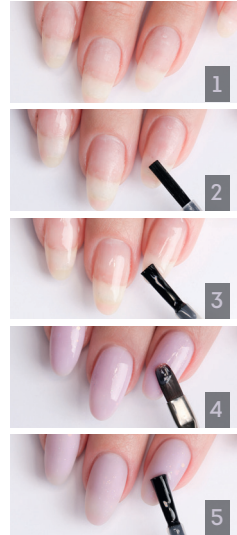
Step 1. Prepare the nail plate, polish and shape. Degrease with Eurocleanser.

Step 2. Apply Ultrabond on the entire nail plate to prevent detachments on the nail cuticles area. Air dry.

Step 3. Apply a thin layer of E.MiLac Base Gel. Cure 1 min in a LED/CCFL lamp.

Step 4. Apply a first thin layer of E.MiLac Twinny Aviation #03. Cure 2 min in a LED/CCFL lamp. Apply a second sculpting layer, turn and center. Cure 2 min in a lamp. Make sure the layer thickness on lateral sides and nail end is at least 0.5 mm. Cure 2 min in a LED/CCFL lamp.

Step 5. Apply a finish coating using E.MiLac Velvet Top Gel. Cure 2 min in a LED/CCFL lamp.



TWINNY

COLOR SCULPTING GEL POLISH



TWINNY HARD GEL

COLOR SCULPTING HARD GEL WITH A SHIMMER



IDEAL
ALIGNMENT
OF THE NAIL
PLATE + COLOR
COATING



SUPERFAST
MANICURE



GREAT FOR NAIL
STRENGTHENING
AS WELL AS FOR
NAIL EXTENSION
ON NAIL FORMS



NATURAL
PASTEL
SHADES

TWINNY HARD GEL
COLOR SCULPTING HARD GEL WITH A SHIMMER

TWINNY HARD GEL

DAIQUIRI #04

Step 1. Prepare the nail plate, polish and shape. Degrease with Eurocleanser.

Step 2. Apply Nail Prep Aid on the entire nail plate. Apply Ultrabond and air dry. Apply a thin layer of Super Bond Gel. Cure in a LED/CCFL lamp for 30 seconds.

Step 3. Fit the nail extension form and make a nail extension with the help of Form Gel Natural. Cure 2 min in a LED/CCFL lamp.

Step 4. Sculpt the nail architecture with the help of Twinny Hard Gel Daiquiri #04. Cure 2 min in a LED/CCFL lamp. Apply a second layer of Twinny Hard Gel Daiquiri #04, if required. Cure 2 min in a LED/CCFL lamp.

Step 5. Use the Nail File Zebra Standard 100/180 to condition the architecture, if required, and polish up with the Soft File 100/180. Degrease with Eurocleanser.

Step 6. Use the Brush Beveled Square for French manicure #6 and CLASSIC gel paint Alpine Snow to draw a decorative smile line. Cure 2 min in a LED/CCFL lamp.

Step 7. Apply a finish coating at your choice: E.MiLac Top Gel/E.MiLac Ultra Shine Top Gel/E.MiLac Velvet Top Gel. Cure 2 min in a LED/CCFL lamp.



TWINNY HARD GEL

COLOR SCULPTING HARD GEL WITH A SHIMMER



TWINNY HARD GEL

COLOR SCULPTING HARD GEL WITH A SHIMMER

TWINNY HARD GEL BLUEBIRD #02

Step 1. Prepare the nail plate, polish and shape. Degrease with Eurocleanser.

Step 2. Apply Nail Prep Aid on the entire nail plate. Apply Ultrabond and air dry. Apply a thin layer of Super Bond Gel. Cure in a LED/CCFL lamp for 30 seconds.

Step 3. Fit the nail extension form and lengthen the free edge with the help of Form Gel Natural. Cure 2 min in a LED/CCFL lamp.

Step 4. Without removing the sticky layer, use the Nail File Zebra Standard 100/180 to shape the free edge.

Step 5. Sculpt the nail architecture with the help of Twinny Hard Gel Bluebird #02. Cure 2 min in a LED/CCFL lamp.

Step 6. Use the Nail File Zebra Standard 100/180 to condition the architecture, if required, and polish up with the Soft File 100/180. Degrease with Eurocleanser.

Step 7. Use the Brush Beveled Square for French manicure #6 and CLASSIC gel paint Black Tulip to draw a decorative smile line. Cure 2 min in a LED/CCFL lamp.

Step 8. Apply a finish coating using E.MiLac Velvet Top Gel. Cure 2 min in a LED/CCFL lamp.



emi

TWINNY

